



RELIABILITY IN SHIPPING

Vessel Operators

Bulk cargo movers

Heavy lift, Project

Roll on Roll off

IMDG-Hazardous Cargo

Yacht Transport

Offshore Support Services

Bunker Trade



www.aquamarship.com



AQUAMAR SHIPPING LLC was founded by a group of marine transport professionals who among them hold a collective multi sphere shipping experience of 100 years.

From the time of inception a decade ago, the name had been synonymous with superior management of marine cargo transportation assignments. We have never aspired to be 'jack of all trades' but has consistently demonstrated highly focused skills primarily in the marine transportation segment.

Transportation challenges do not normally end at load or discharge ports. Integrated multimodal transport solutions from factory to destination are worked out meticulously, including road plan, computerized pre stowage plan, liaising with stevedores, ships mate, lashing materials selection, lashing plan etc.

Our commitment to meeting the demands of our customers and the motivation to blaze new paths in efficiently mastering the emerging challenges are the wind in our sails.

Ship Operators:

We have an in house chartering division which inter alia caters to our dry bulk cargo as well as project parcels carriage. At any given time we have minimum couple of dry cargo ships under charter plying the oceans. Quite often we undertake COA of construction materials, sulphur, industrial salt, ore etc. Subject market conditions, we operate tramps especially in the Med-Black-Red sea/ Arabian Gulf and South east Asia-India-Africa/Arabian gulf sectors.



Heavy lift and Project cargo Movers:

We offer LIFT, SHIP and INSTALL services as a package, when and where required be it a 500 MW generator from Europe to Oman or 11 railway wagons from E.C India to Afghanistan via Iran or a cement kiln to West coast of Africa. No mountain is un climbable. Oil and gas industry, offshore wind energy sector, expansion of port infrastructure, construction and modernization of thermal power plants and virtually anything large, heavy and complex, are the focus of our core business of PROJECTS & HEAVY LIFT.





Yacht Transportation:

Yacht transportation is another of our expertise, where we are able to provide very competitive freights, without compromising on reliability and safety. We arrange specialized spreaders, lifting gears/materials, boat cradles, chokes, crating when required so as to avoid any sort of damage to the yacht hull or superstructure. Yard to destination, water to water or quay to water carriage or dry towage is offered.

General Cargo, bulk:

Owing our extensive networking with dry cargo vessel operators from coastal to panamax to capemax sizes, we provide diversified needs in dry cargo transportation, be it a single voyage time or trip charter, a COA of ore, aggregate, grain, cement, steel or logs, our offices would attend to customer specific need on 24 x 7 basis.

Ro-ro/Ro-lo:

Any type of vehicles, from cars to amphibians on wheels or in tracks can be shipped out worldwide including Heavy trucks, earth moving equipment's, crawler cranes, rattles, military vehicles etc... We operate ro-ro vessels with ramp capacity up to 200 tons swl main garage height of 6.5 meters.

Offshore oil exploration/production support services:

An experienced reliable partner in all offshore installation projects, be it, load out of a Jacket, top end installation, or subsea installation of SPM mooring lines, we marshal and provide the pontoon barges, tugs, Crane barges, ROV and diving team at very short notice.

IMDG/Hazardous cargo:

We have our team of trained IMO hazardous cargo handling personnel. We routinely handle IMO cargo shipments of class 1.1 from South Africa, Black sea and EU to gulf, red sea area. We are able to provide at short notice IMO and SOLAS certified vessels for the afreightment.

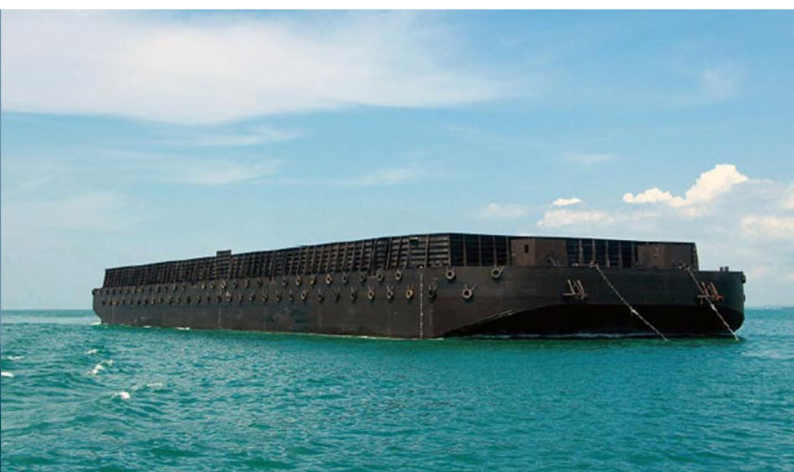
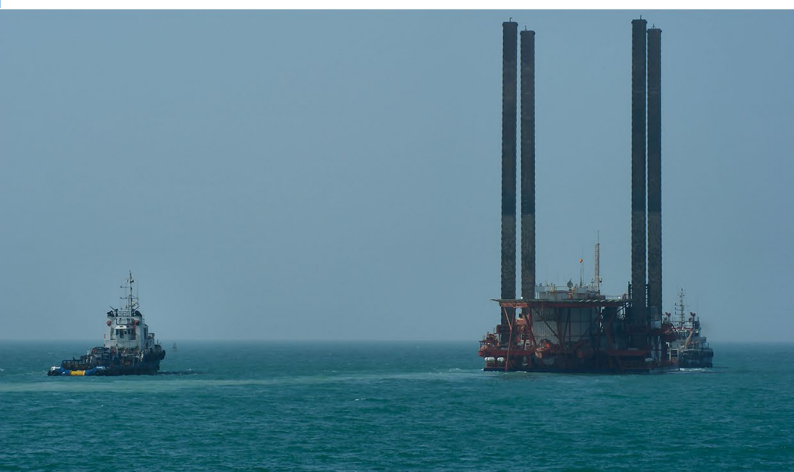
Terminal tow, salvage tow, Platform towage:

We offer harbor towage for vessels to move to berth, in ports where tugs are temporarily insufficient or under powered. Salvage towage is offered in and around the Arabian gulf.

Float on Float Off and Dry Towage:

Hull damaged ships, jack ups, un manned demolition tonnages are transported by submersible ships where a "dry tow" is offered. We have techno-commercial tie ups with major submersible vessel operators and can undertake east or west coast Africa, continent, med, Arabian Gulf, India and far east operations. When deploying a purpose built semi-submersible is commercially unviable, we offer in house know how, personnel and equipment to convert conventional sea worthy pontoon barges into submersibles on ad hoc basis.

Our team of ballasting engineers undertakes to submerge conventional barges on ad hoc basis to enable dry towage of vessels of up to 2000 mt LDT, and this process is highly cost and time effective when compared to conventional purpose built semi-submersible ship charter/freight charges.



Our colleagues in the organization:

Our personnel believe in the relevance of responding to market needs, rather than trying to mould them to our profile. The ability and flexibility to do so rest on the strength of our colleagues who take passionate interest in each project handled.

Our corporate social responsibility (CSR):

CSR is and was not a window dressing for us. We have assimilated the principle of corporate self-regulation into our business model. Our CSR policy functions as a built in self-regulatory mechanism where business would innately monitor adherence to law and applied ethical norms. As a consequence our business practice has embraced the social and environmental obligations and strived for positive impact on the environment, clients, employees, and community.



Aquamar Shipping LLC
Office 4201 E, 42 Floor, Aspin Commercial Tower,
Shaikh Zayed Road, PO Box 31970, Dubai, United Arab Emirates
Tel: +971 4 337 4440
Fax: +971 4 337 4424

Email: aquamar@eim.ae
www.aquamarship.com

